

# EHS Newsletter



Hello,

We are sharing a new issue of Echo's EHS Newsletter.

Below you will find a summary of the second quarter of 2020.

Enjoy reading!

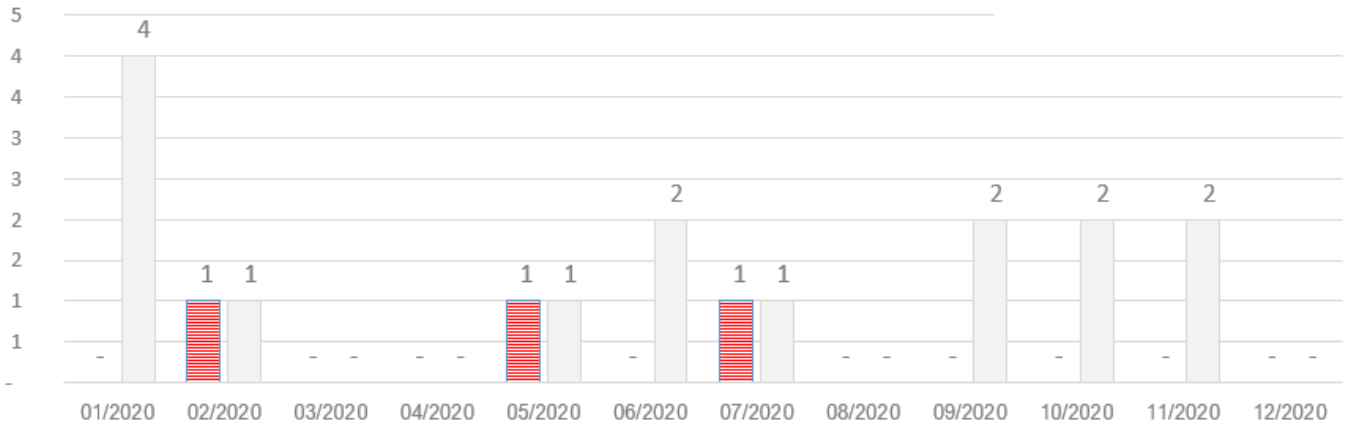
**ECHO**  
investment

## Indicators

## ACCIDENTS AT WORK

■ 2020

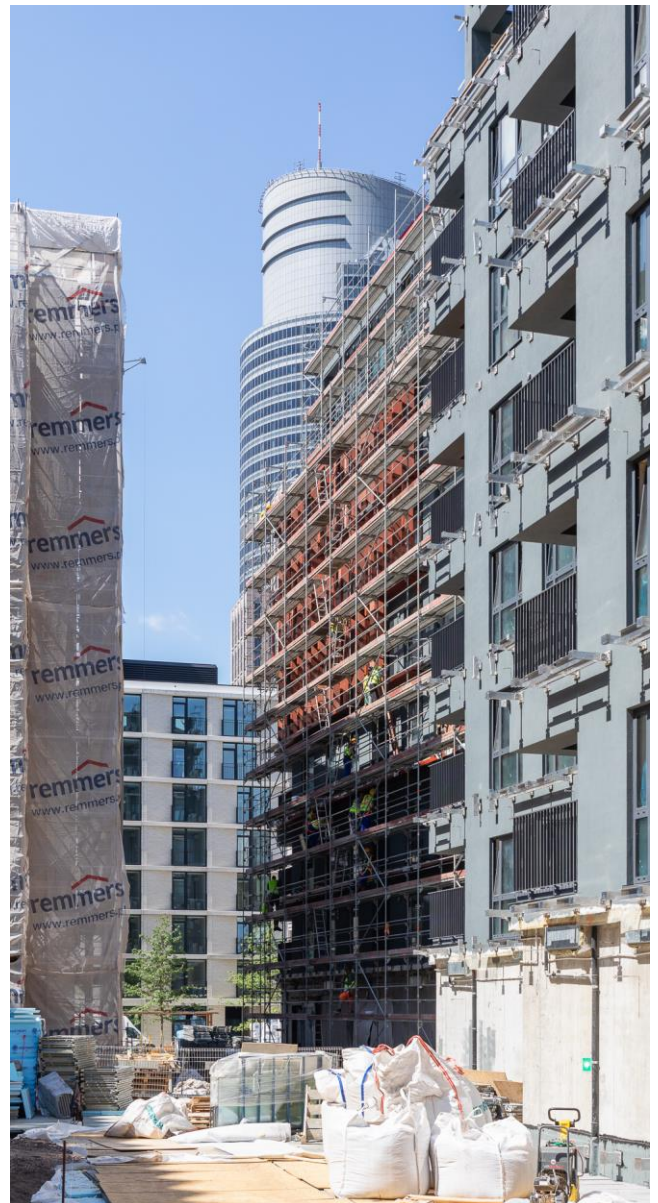
■ 2019



From May to July, 2 accidents at work and 5 incidents occurred at Echo's construction sites. The ratio of serious incidents to the number of accidents (13: 2) is very positive.

Thanks to the reporting of serious incidents, we can take preventive actions and reduce accidents. Thank you for all your submissions!

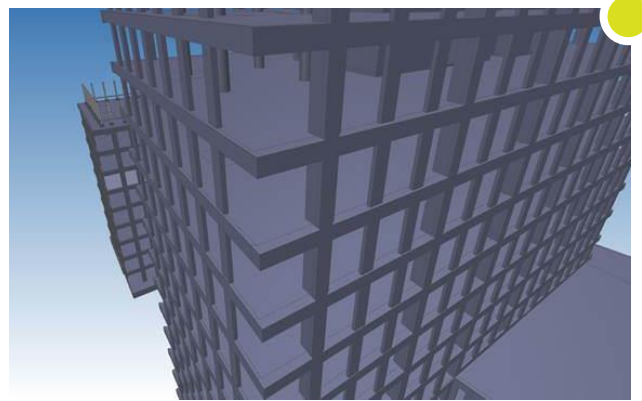
ESSV visits to construction sites have resumed since June. During that time, members of the management team made 27 ESSV visits. The ratio of the number of supervision employees to physical employees (1/10) remains at a good level. In the last 3 months, it ranged from 142% to 146%. The number of Peer Reviews performed by construction sites (May 78, June 82, July 79) is stable. Thank you for sending information systematically.



# Standards

## We design in BIM

We have recently started working on the implementation of BIM (Building Information Modeling). This will be an important part of managing information about buildings since the design stage. BIM is a design method that uses new technologies available on the market. This solution will enable more precise planning and construction, while increasing safety and reducing costs. We are currently working on implementing the EPS security systems provided by TLC.

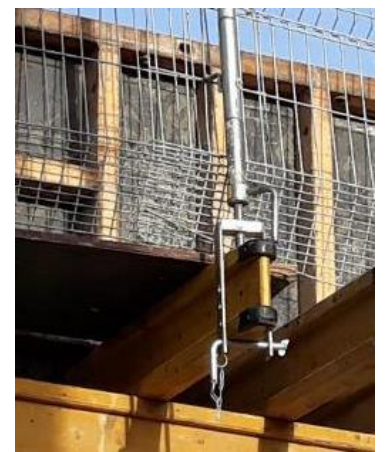


## Guidelines for the drawing part of the project

The EHS team, in cooperation with the design department, developed the document „The EHS guidelines for the drawing part of the tender and execution project“.

The guidelines describe solutions that increase the level of safety in the following areas:

- Securing work at height,
- Shafts, technological holes,
- Installation shafts,
- Balconies,
- Staircases.



## Standards



### **Guide - road traffic, pedestrian traffic, logistics**

In order to prevent risks regarding the road traffic, pedestrian traffic and logistics, we developed a guide to discuss these issues. In the document, we included information on organization of traffic, delivery of goods, works on public roads, rules of vehicle traffic on the construction site and the separation of pedestrian and car traffic. The guide is available on the Echo EHS extranet in the *Publications* section in the *Guides* folder.



### **Goggles**

Safety glasses are the basic protection against splashes and debris that can damage the eye. They provide protection against dust, high intensity light (with the use of appropriate filters) and chemical substances. For better protection, all Echo construction sites which started operating after 1 September, 2020 need to ensure that every worker is equipped with safety glasses so that they can use them if necessary. All employees/visitors should always have safety glasses with them and use them when performing the work (the list of works is included in the *Requirements*) or when in the danger zone (a place where there is a risk of eye injury).

## Standards

### Securing balconies

At Echo, we strive to minimize the risk when performing particularly dangerous works, e.g. at heights or at the edge. Due to the high risk and problems noticed on our construction sites regarding appropriate protections during works on balconies, guidelines have been developed.

The most important requirements are to, in the first place, provide prefabricated balconies with a system of temporary barrier (e.g. the EPS systems provided by TLC or equivalent).



In prefabricated balconies, at the design stage, installation of temporary protections at the assembly points intended for the installation of the target balustrades should be foreseen.

When using monolithic balconies, a temporary edge protections should be installed. After disassembly of the formwork elements, the solution should be applied as for prefabricated balconies.

### ISO 14001 audit; ISO45001

A Dekra audit will take place in October 2020. This year, Echo's goal is to adapt the organization to ISO 45001. The purpose of the audit is to check and assess the degree of compliance with the requirements set out in ISO 14001; ISO45001. Internal audits are also carried out on construction sites by the EHS team.





numer katalogowy  
nazwa / treść

**BB1802**  
**Taśma odgradzająca**  
**czarno-żółta**

wymiar  
materiał

**długość 100 m**  
**poliester**



numer katalogowy  
nazwa / treść

**BB1803**  
**Taśma odgradzająca**  
**biało czerwona**

wymiar  
materiał

**długość 100 m**  
**poliester**

### What's new in SIDO?

The offer of the SIDO online store has been extended to include a new assortment, e.g. warning tapes.

In the store's catalog you will find warning signs, EHS information boards, pandemic-related materials and many other useful materials.

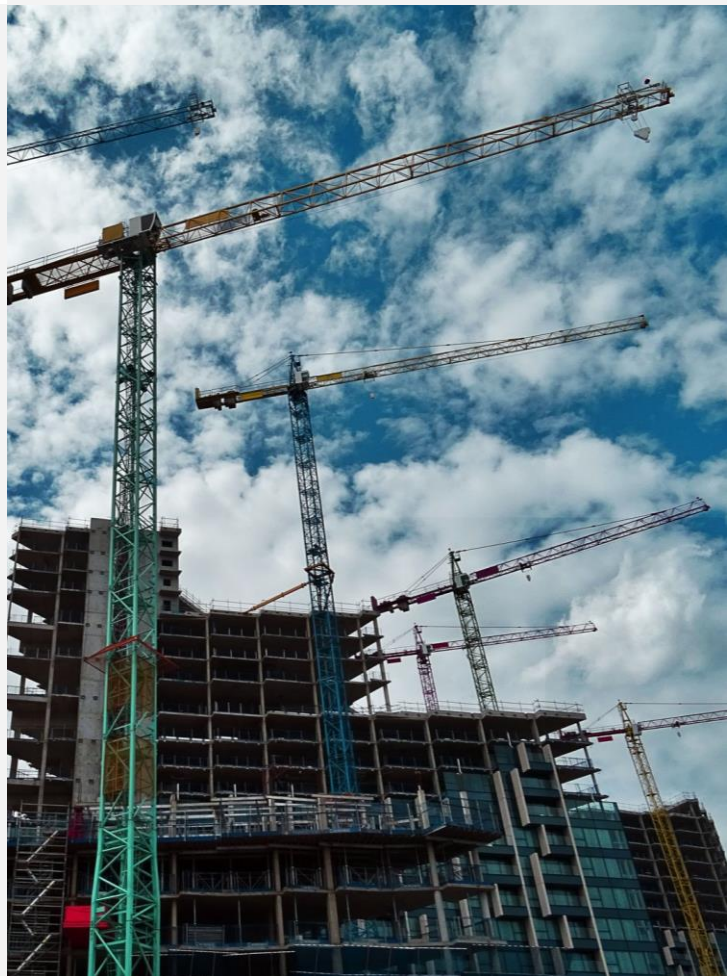
The store's offer is systematically updated. Soon, it is planned to expand the range with additional signage and fire-fighting equipment.

### Updated EHS documents

Please remember to introduce new documents on construction sites as of the date of publication.

Several EHS documents have been updated on Extranet and Link recently:

- Requirements (revision 18);
- Pre-collection days - rules for visitors;
- Pre-collection days - rules for coordinators;
- Rules for imposing financial penalties on Echo construction sites;
- COSHH Risk Assessment;
- Risk and Opportunity Registry;
- EHS guidelines for the project;
- Guidelines for the content of the drawing part of the tender and design project.

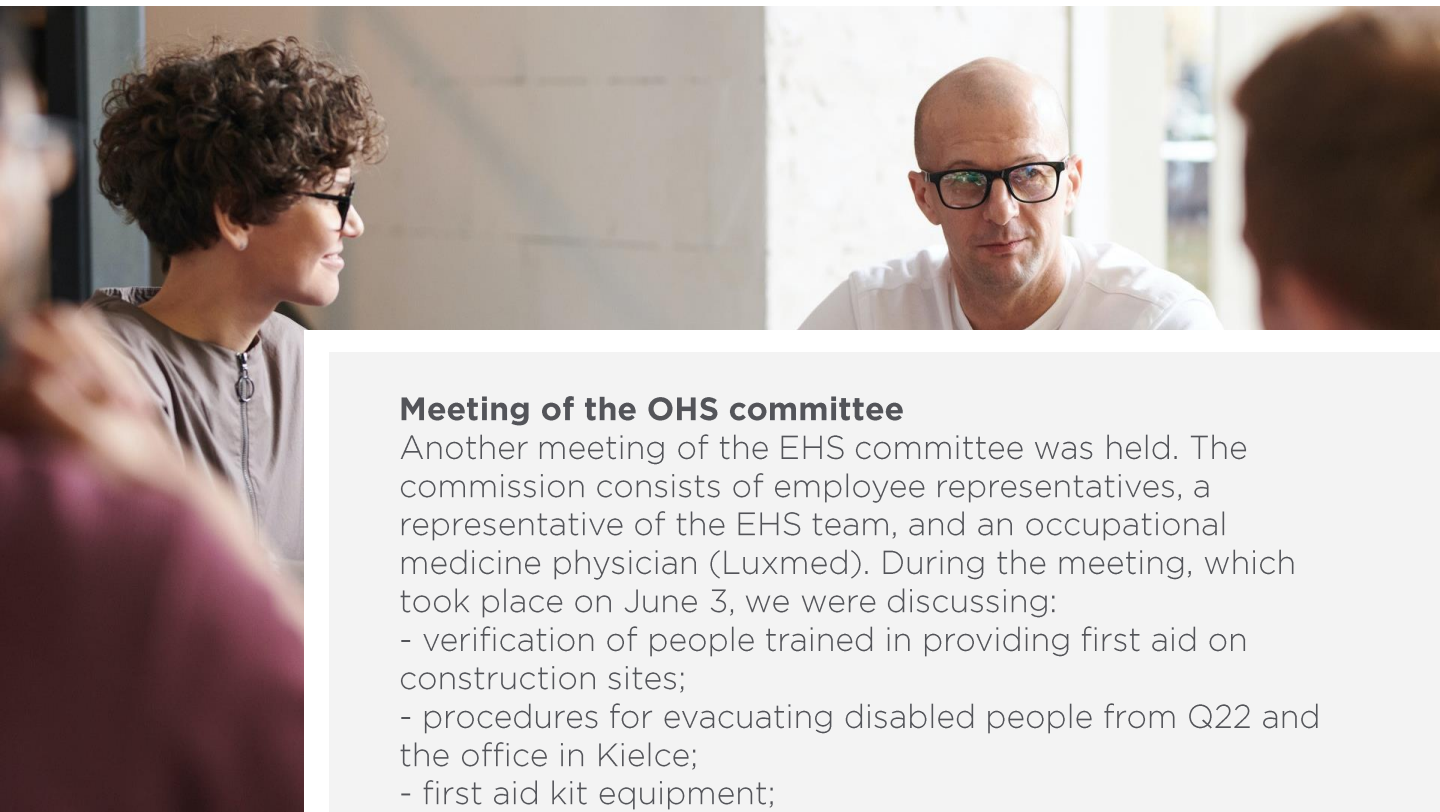


# Training

## Building the EHS culture at Echo

In connection with the plans to further develop the Echo's EHS culture, an anonymous online survey was prepared for the supervision of Echo and contractors at construction sites. It is an additional form of communication with construction sites. You can be sure that each of the completed and returned questionnaires will be read, and your answers will be used for further analysis and will result in improvement actions.

**In September you will receive an email invitation to participate in the survey.**



## Meeting of the OHS committee

Another meeting of the EHS committee was held. The commission consists of employee representatives, a representative of the EHS team, and an occupational medicine physician (Luxmed). During the meeting, which took place on June 3, we were discussing:

- verification of people trained in providing first aid on construction sites;
- procedures for evacuating disabled people from Q22 and the office in Kielce;
- first aid kit equipment;
- coronavirus - challenges and risks in the context of the company's operations;
- implementation of thematic trainings;
- implementation of elements of the EHS management system into projectFlow;
- waste segregation in line with Echo's goals.

# Training



## The SMSTS Refresher and Training for Supervisors (SOT) to be held online

Due to the COVID-19 pandemic, SMSTS and SOT trainings will be continued remotely using Microsoft Teams. The first online training session will be scheduled in September!

# Good practices

In the past months, we have observed many interesting initiatives and good practices in the field of health and safety at Echo's construction sites. We present the most interesting examples.



**Guidelines for drivers**  
*MidPoint 71*



**Tool Box Talk**  
*MidPoint 71*



**Marking of lockers with shoe numbers**  
*MidPoint 71*



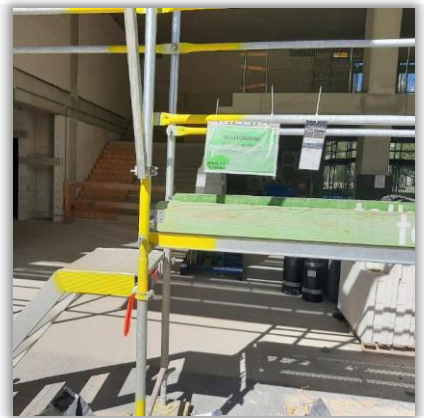
# Good practices



**Securing the entrance for trucks and directing traffic** *MidPoint 71*



**Systemic edge protection** *Enter*



**Access platforms for facade scaffolding** *REACT*



**Fencing of communication routes** *Stacja 3.0*



**Scaffolding in the installation shaft** *Esencja*



**Mechanical unloading and transport** *Esencja*



**Fencing the danger zone on the roof** *Woronicza/Suwak R4R*



**Elevated scaffolding to secure the works on the roof** *Esencja*



**CCTV monitoring of building materials** *Face2Face*

# Good practices



**Fast and safe passenger elevator** *Face2Face*



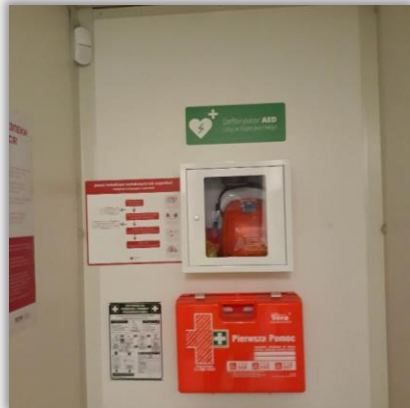
**Protective roof along the communication road** *Face2Face*



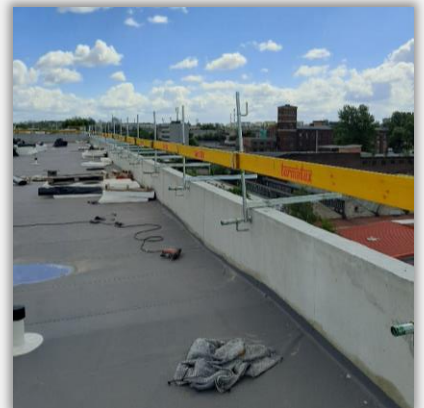
**Organization of access to the roof** *Przymorze R4R*



**Protective roof for visitors** *REACT*



**Defibrillator** *Fuzja*



**Protection on the roof attic** *Fuzja*



**Protection of shafts** *REACT*